



NIDEC

Nidec Global Appliance - Reuniao FIESC

Nov, 2024

ABOUT NIDEC

We are part of Nidec Corporation



Founded in 1973



HQ: Kyoto,
Japan



340+
Companies



Mergers & Acquisitions (M&A) are the
driving power behind growth.
*So far, there have been over 60
M&As.*



40+
Countries



\$0.91 B
Group Operating Profit (FY 22)



110,000+
Employees Worldwide



\$22.4 B
Net sales (FY 22)



Shigenobu Nagamori

Founder, Chairman of
the Board at Kyoto HQ

NIDEC PRODUCTS PRESENT IN A WIDE RANGE OF APPLICATIONS



INFORMATION TECHNOLOGY

PCs / Servers
Data Center Cloud / Smartphones
/ Haptics / HMI
Consumer Electronics
Digital Recorders / Cameras



VEHICLES

EV Traction Drives
Passenger Car Peripherals &
Electronics



ROBOTICS

Factory Automation
Automated Guided Vehicles
Power Assist Suits
Personal Mobility
Telepresence Robot and Drones



POWER GENERATION

Electric Generators
Nuclear / Renewable Energy
Battery Energy Storage Systems
Grid Stability



ACIM

APPLIANCES

Washers / Dryers / Dishwashers
Refrigerators
Fans / Air Conditioners

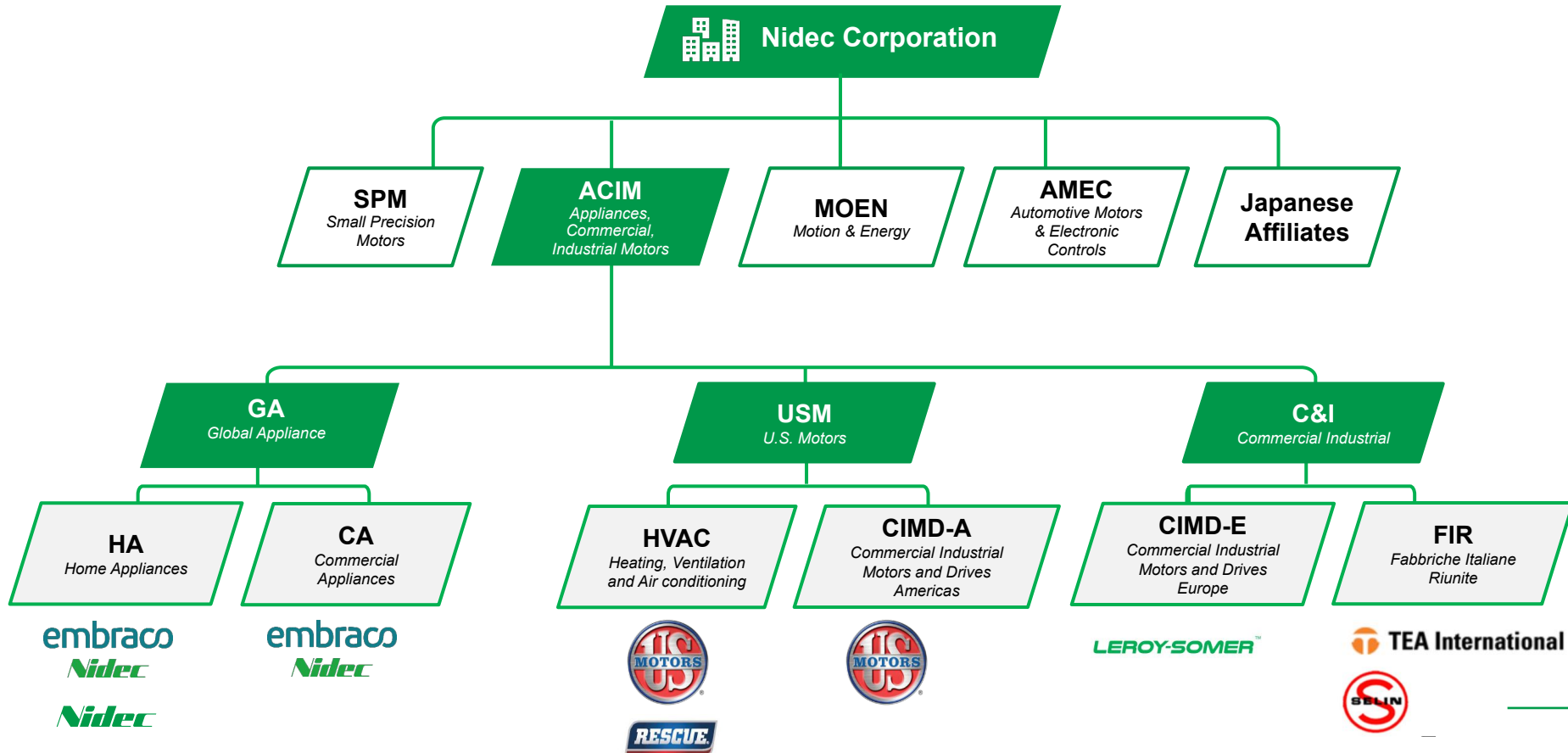


ACIM

INDUSTRY

Automation Systems / Conveyors
Compressors
Fans
Pumps

NIDEC CORPORATION STRUCTURE



ACIM OVERVIEW

A business unit focused on
Appliances, Commercial and Industrial Motors



HQs: Pordenone (Italy) and Joinville (Brazil)



Present in **+25 countries** with **37 manufacturing sites**



Over 20.000 employees



3.2 B USD turnover (FY 22)



ACIM GLOBAL FOOTPRINT

NORTH AMERICA

8 Manufacturing Sites
+ 7,500 employees

LATIN AMERICA

 **Headquarter - Joinville/Brazil**

4 Manufacturing Sites
+ 4,000 employees

EUROPE & MIDDLE EAST

 **Headquarter - Pordenone/Italy**

19 Manufacturing Sites
+ 6,000 employees

ASIA PACIFIC

6 Manufacturing Sites
+ 2,000 employees

 **37**
MANUFACTURING SITES

+30
BUSINESS OFFICES

+25
COUNTRIES

\$3.2B SALES | YEAR
70M UNITS SOLD | YEAR
+20.000 PEOPLE

ACIM PORTFOLIO & APPLICATIONS

GA Global Appliance

Home Appliances



Commercial Appliances



USM U.S. Motors

HVAC



CIMD-A



C&I Commercial Industrial

CIMD-E



FIR



PORTFOLIO

APPLICATIONS

